

Eaton Neighbourhood Plan

Questionnaire

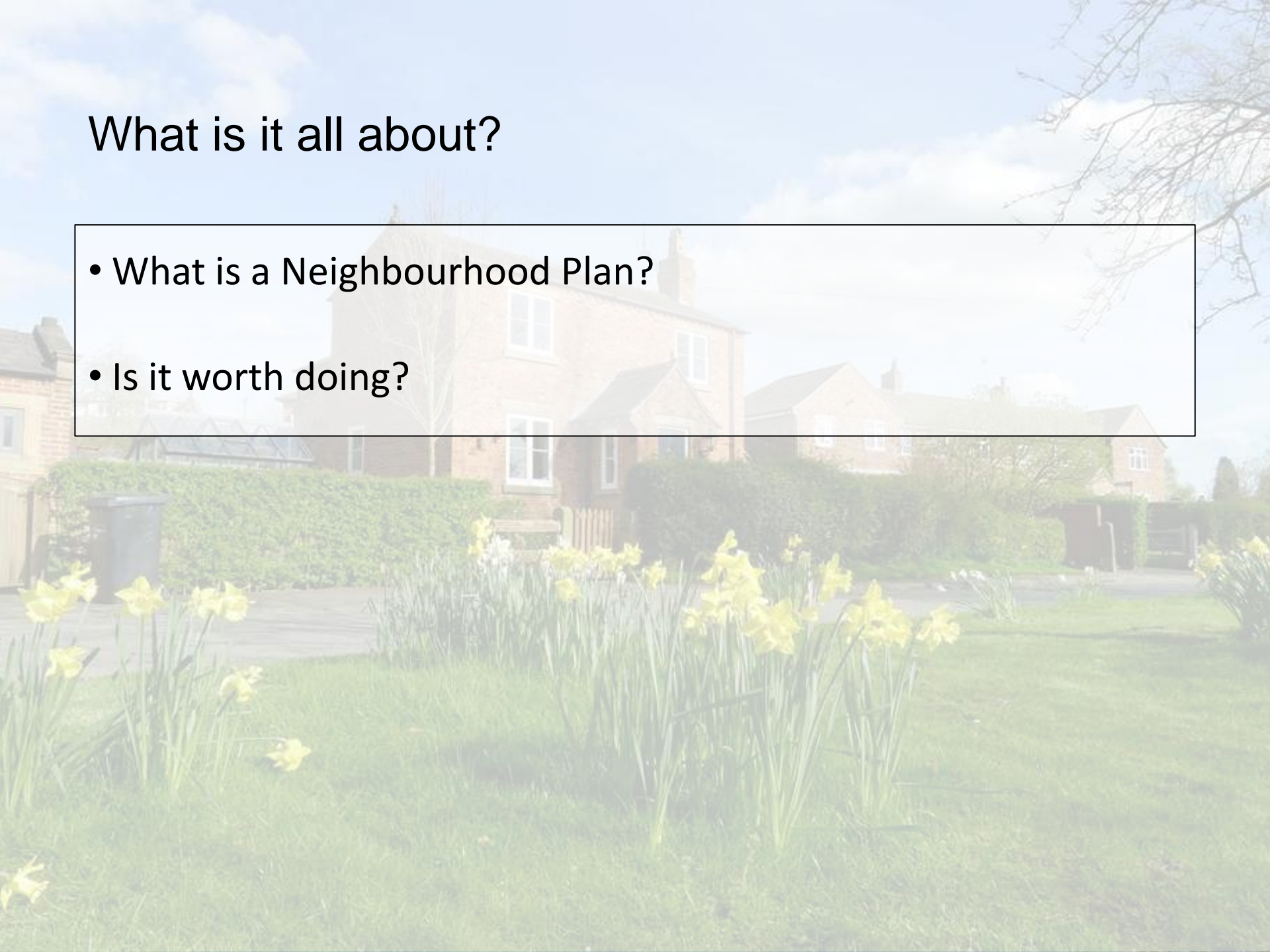
Your Feedback - Presentation

Agenda for the presentation:

- What is it all about?
- The story so far
- Presentation of the Analysis Document
- What happens next?
- Q & A

What is it all about?

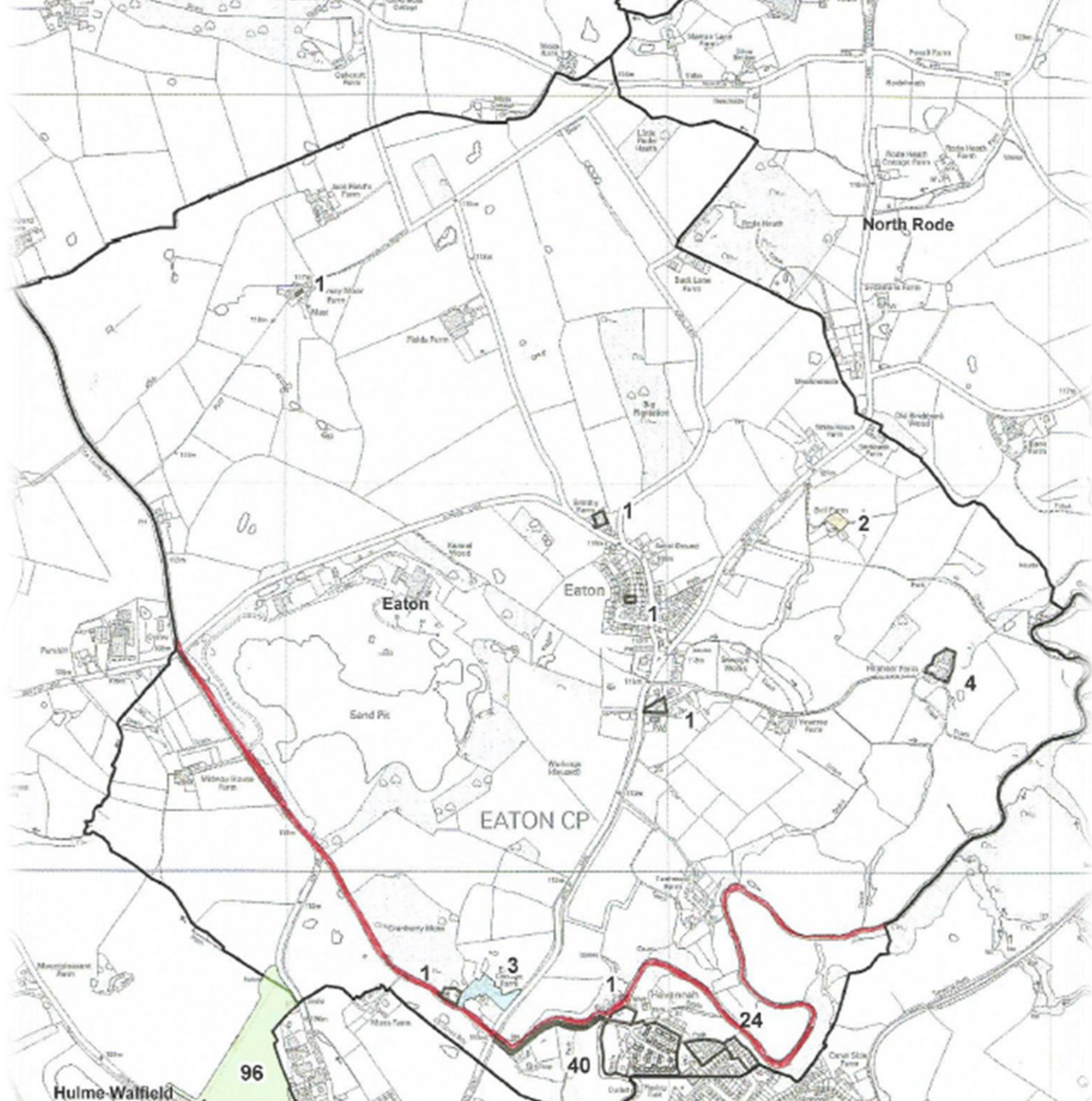
- What is a Neighbourhood Plan?
- Is it worth doing?



The Story so far

- Formation of the team
- Area Boundary





The Story so far

- Formation of the team
- Area Boundary
- Consult with residents – Questionnaire
- Collection and Analysis
- Presentation of Analysis report.

Section K - Demographics

- 40% of the Eaton residents are aged 45-64, 40% over 65
- 2/3 of the residents have lived in Eaton for more than 10 years
- 40% of the respondents are retired, 27% in full-time employment and 16% self-employed
- The majority of the residents work within 5-20 miles of Eaton.

Section A: Likes & Dislikes

LIKES

- The rural, crime free, peaceful nature of the village
- Strong sense of community celebrated by events and via hubs such as: The Plough & the Church

DISLIKES

- The roads - their busyness, pollution, danger and speed
- No village shop, poor broadband and worries about the quarry

Section B: Planning & Development

Keep Eaton separate from Congleton

- Concerns about encroachment from Congleton, loss of identity, lack of facilities for additional housing and increased traffic
- You want to preserve key buildings such as the Church, The Plough, the listed buildings & Quaker Graveyard
- The woods & fields around Back Lane & Moss Lane are seen as integral to the village's character with key trees, hedgerows, ponds and buildings identified for preservation

Section B: Planning & Development

Let's be honest; you're not really in favour of development at all!

- The retention of green fields was top of the agenda
- 90% of you want to see the village grow by less than 20 properties by 2030
- If you had to have any it would be in small sub 10 dwelling developments, maximum 2 storey for families with off road parking
- Critically there is no consensus where this development should take place.

Section C - Environment

Not too bad at all really...

- Regular refuse collections by Cheshire East were felt to be good.
- Fly tipping and general rubbish from cars frustrated people
- Road noise, quarry noise and model aircraft flying were the main sources of annoyance
- No major eyesores in the village and you would like the views to remain as they are
- Small scale renewable energy and environmental initiatives eg communal composting
- Not in favour of major renewable sources eg: fracking, wind turbines or solar panel farms.

Section D – Safety & Security

- The issue of the A536 within the village is of great concern to the residents
 - The need for a reduced and enforceable speed limit being of high importance, together with the need for pedestrian crossings.
- Speeding traffic on the lanes within and around the village is also thought a real safety issue.
- However, the majority of residents feel that Eaton is a safe place to live.

Section E - Leisure activities

- The most popular requested additional leisure facilities were more rural footpaths, adult classes, a bowling green and a youth club for younger residents.
- A large number of residents (over 30%) use the village footpaths on a daily basis.
- A larger number of residents use the lanes on a daily basis, with the majority of residents using the lanes on at least a weekly basis.
- The Millennium park is popular with younger families in the village.
- A variety of improvements to facilities were suggested, including more activities in the church hall, such as yoga and keep fit classes.
 - The majority of residents rate the facilities in the hall as 'good', since the refurbishment.
- A small number of residents use the library service. However, it should be noted that this may be a valuable service to those residents who may find it difficult to travel to Congleton.

Section E - Leisure activities

The Future of The Quarry

- The majority of residents would like to see public walkways constructed around the lakes, and/or the lakes to be used for quiet recreational activities like fishing or sailing.
- Nearly 25% of residents would prefer for trees to be planted around the lakes, and leaving them to nature.
- Only a small percentage of residents would like to see houses developed around the lakes.

Section F - Economic Development and Enterprise

- **The majority of residents do not want to see the development of any small offices or workshops**
- Over 30% of residents responded that there were factors that prevented them from being able to work from home, including:
 - poor broadband speed
 - poor mobile signal.
- The majority of residents visit Congleton for shopping and other services.

Section G – External Services

- **Internet**

- Majority in Eaton (70%) are dissatisfied with their internet speed
- Most get 1 to 5 Mbps - Govt says 10Mbps is the minimum acceptable

- **Mobile phone coverage**

- 66% are dissatisfied with the mobile signal in Eaton
- 15% say they get no signal at all in their homes

- **Other services**

- Landline phones, TV signals, electricity, water and the post services are generally good.

Section H - Transport

- **Bus service**

- Only 11 people use it regularly - daily or weekly
- 64 people use it occasionally, and 60 never

- **Improvements to the bus service**

- Reliability
- Requests for route changes /bus stop location
- Disability access
- Timetable

- **Cycling around Eaton**

- 64% of the 34 cyclists experience problems
- A34 traffic too fast, roads too busy, and the number of potholes.

Section I – Roads & Highways

- Some road surfaces are in poor condition, with Back Lane frequently mentioned
- 52 respondents felt that the drains were an issue within the village
- Mowing of the grass areas is appreciated
- Adequate road signage
- Speeds on the main road
- Use of School Lane.

Section J – Additional Comments

- Only completed by a small number of residents
 - Does Eaton have the infrastructure to cope with any future development?
 - The green-belt and fields
 - Existing sand quarry
 - Thanks to the team...

What Happens Next?

- Further information gathering – Consultants
- Grant Application from Cheshire East Council
- Write the Draft Plan
- Further consultation with the Eaton residents
- Submit to Cheshire East Council for a Consultation Period
- Amend and revise plan accordingly
- Referendum
- Submit to Cheshire East Council for final approval.



Thank you for listening.

plan.eaton@gmail.com
www.eatoncheshire.co.uk

Please do ask us any further questions
regarding the Neighbourhood Planning
process.